

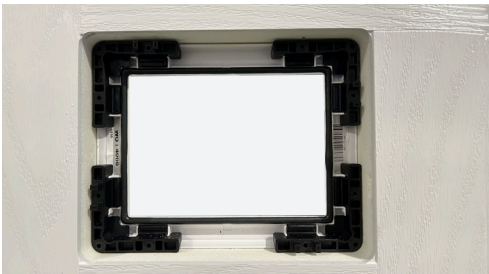


## Cassette Installation Guide

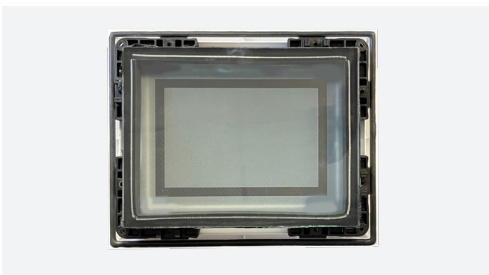
### 5 Easy Steps to Safely and Quickly Install Cassettes



All FLiP cassettes will be supplied pre-gasketed and with connectors fitted to the external frame.

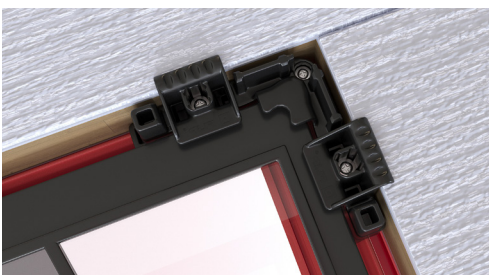


Place the outer cassette onto a horizontal flat surface. Lay the door aperture over the cassette and ensure it is square.



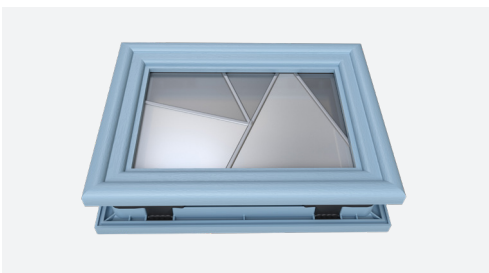
Position the frame square within the aperture, then place the glass gently on to the outer cassette. (Glass units should be 26mm)

Ensure the glass is square in the frame (this is made easier with the dry seal).



Install and align the Internal connector (including screw) to the outer frame.

**DO NOT EXCEED 1.8Nm** of torque on your driver as excessive force can cause the frames to crack.



Insert the internal cassette in to the connector heads ensuring that they are aligned and firmly push down into position. Use a soft rubber mallet to help if needed.

# Post Installation Care Guide

## Cleaning

Depending on the degree of grime on the surface, clean with warm soapy water (do not use any detergents, acid/alkaline or solvent based materials), using a wet cotton cloth using light pressure. Rinse afterwards with clean water.

---

## Care

For the long term preservation of the high quality surface, regular cleaning and care are necessary. In some areas the high level of air contamination will lead to deposits sticking firmly, which are difficult to remove. In order to prevent heavy dirt deposits we recommend regular cleaning and care of the frames.

- The frame surface/paint must be cleaned when it becomes soiled
  - The cleaning intervals should be determined by the amount of soiling and not exceed 6 months in normal environments
  - Cleaning should commence at the date of installation using the methods described above
  - Fully documented and corroborative records must be kept by the client of the building. Stating the date, contractor and cleaning material used.
  - If touch up materials are used after installation, details of the materials used, the date of touch up and reason for touch up must be kept with the cleaning records
- 

## Final Remark

Cleaners and polishes contain solvents, for example "nail varnish removers", cellulose or alcohol based plastic cleaners must not be used. The utilisation of abrasive substances as well as a dry rubbing with a duster or similar is to be absolutely avoided.



DESIGNED & MADE  
IN BRITAIN

Motorway House | Charter Way | Macclesfield | Cheshire | SK10 2NY  
Telephone: 01625 428 955 | Email: info@door-co.com

Brought to you  
by DoorCo.

